

# PRODUCT INFORMATION PACKET

**marathon**<sup>®</sup>  
Motors

Model No: 444TSTDS16034  
Catalog No: U456A  
150,1800,DP,444TS,3/60/460YD  
Open Drip Proof (ODP)



Regal and Marathon are trademarks of Regal Beloit Corporation or one of its affiliated companies.  
©2018 Regal Beloit Corporation, All Rights Reserved. MC017097E

**REGAL**<sup>®</sup>



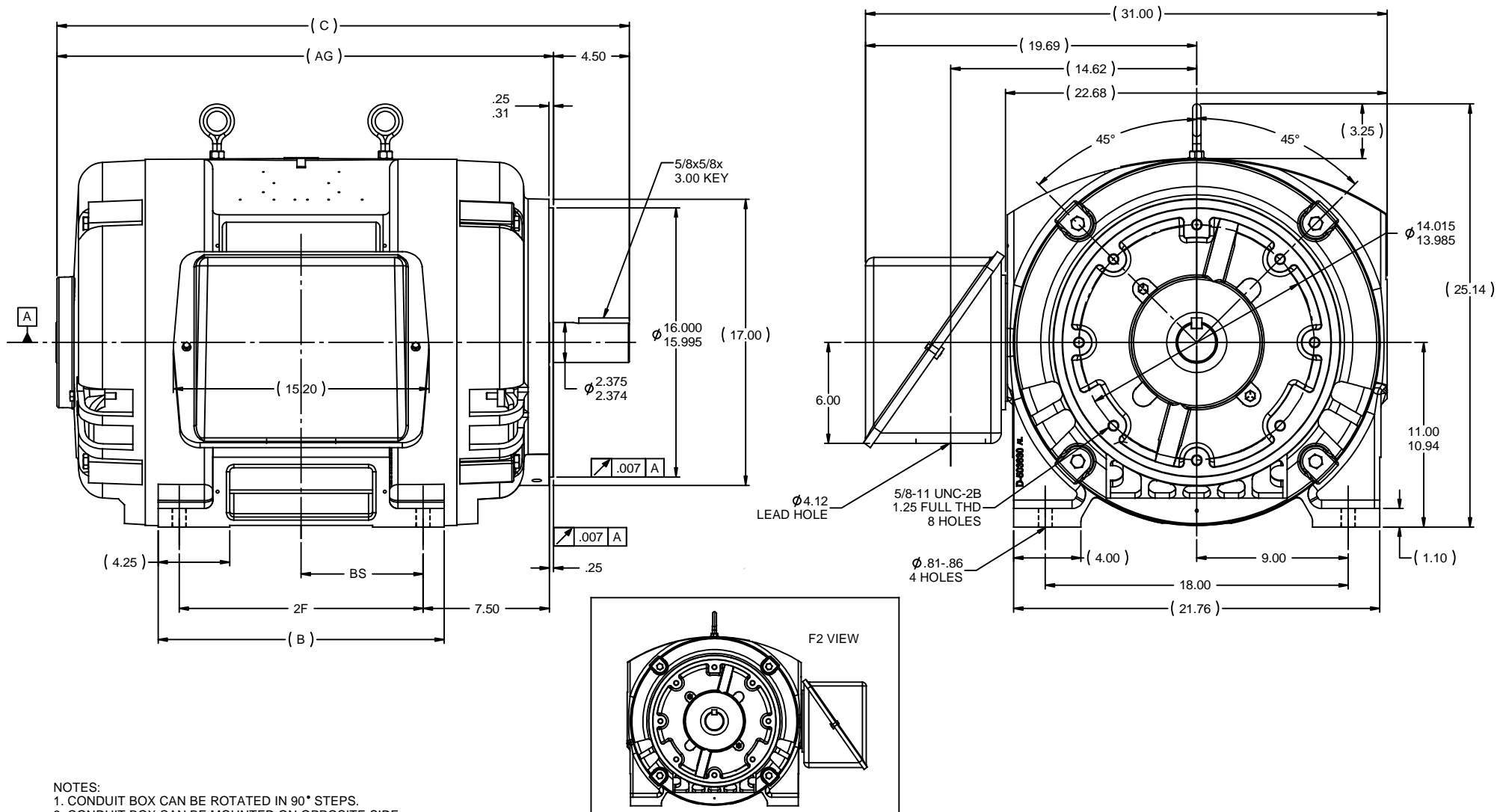
### Nameplate Specifications

Output HP	<b>150 Hp</b>	Output KW	<b>112.0 kW</b>
Frequency	<b>60 Hz</b>	Voltage	<b>460 V</b>
Current	<b>170.0 A</b>	Speed	<b>1785 rpm</b>
Service Factor	<b>1.15</b>	Phase	<b>3</b>
Efficiency	<b>95.8 %</b>	Duty	<b>Continuous</b>
Insulation Class	<b>F</b>	Design Code	<b>B</b>
KVA Code	<b>F</b>	Frame	<b>444TSC</b>
Enclosure	<b>Drip Proof</b>	Overload Protector	<b>No</b>
Ambient Temperature	<b>40 °C</b>	Drive End Bearing Size	<b>6313</b>
Opp Drive End Bearing Size	<b>6313</b>	UL	<b>Recognized</b>
CSA	<b>Y</b>	CE	<b>Y</b>
IP Code	<b>12</b>		

### Technical Specifications

Electrical Type	<b>Squirrel Cage Induction Run</b>	Starting Method	<b>Wye Start Delta Run</b>
Poles	<b>4</b>	Rotation	<b>Reversible</b>
Mounting	<b>Rigid base</b>	Motor Orientation	<b>Horizontal</b>
Drive End Bearing	<b>Ball</b>	Opp Drive End Bearing	<b>Ball</b>
Frame Material	<b>Cast Iron</b>	Shaft Type	<b>TS</b>
Overall Length	<b>34 in</b>	Frame Length	<b>18.50 in</b>
Shaft Diameter	<b>3.375 in</b>	Shaft Extension	<b>4.75 in</b>
Assembly/Box Mounting	<b>F1/F2 Capable</b>		
Outline Drawing	<b>B-SS509474-1850</b>	Connection Diagram	<b>A-EE7340</b>

This is an uncontrolled document once printed or downloaded and is subject to change without notice. Date Created: 06/29/2018



- NOTES:  
 1. CONDUIT BOX CAN BE ROTATED IN 90° STEPS.  
 2. CONDUIT BOX CAN BE MOUNTED ON OPPOSITE SIDE BY REMOVING BRACKETS AND TURNING FRAME 180°.  
 3. NAMEPLATES TO BE READ FROM CONDUIT BOX SIDE OF MOTOR.

DASH	FRAME	B	C	AG	2F	BS
1850	444TSC	17.00	34.00	29.50	14.50	7.25
2050	445TSC	19.00	36.00	31.50	16.50	8.25

REVISION		BY & DATE	CHK	ANG	±7'30"	FINISH	SIZE	DRAWING NO	REV
9	REDRAWN IN SOLIDWORKS	JSB 09-13-2011	XX	DEC	INCHES		B	SS509474	9
8	ADDED F2 VIEW	CDP 09-08-2011	CMN	X	±.1				
7	UPDATED FRAME AND CONDUIT BOX CN 28063	KL 10-21-2004	XX	XX	±.03	TITLE OUTLINE			
6	REDRAWN IN AUTOCAD	TAT 06-29-2004	ML	XXX	±.005	440TSC FR. - DR.PR. - C'FACE			
5	REDRAWN ON CADD	TBL 03-16-1988	XXX	XXX	±.0005	MAT'L			



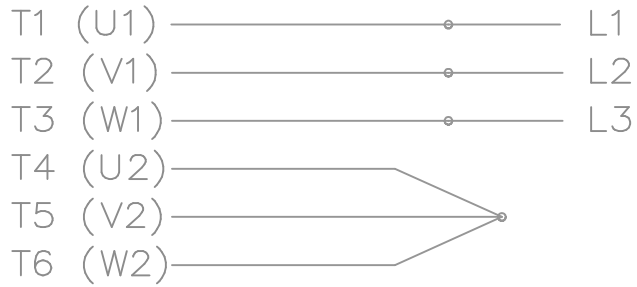
DRAWN TBL 03-16-1988  
 CHK FG 03-16-1988  
 APPR ML 03-16-1988

SCALE 1:5.5  
 REF  
 FMF

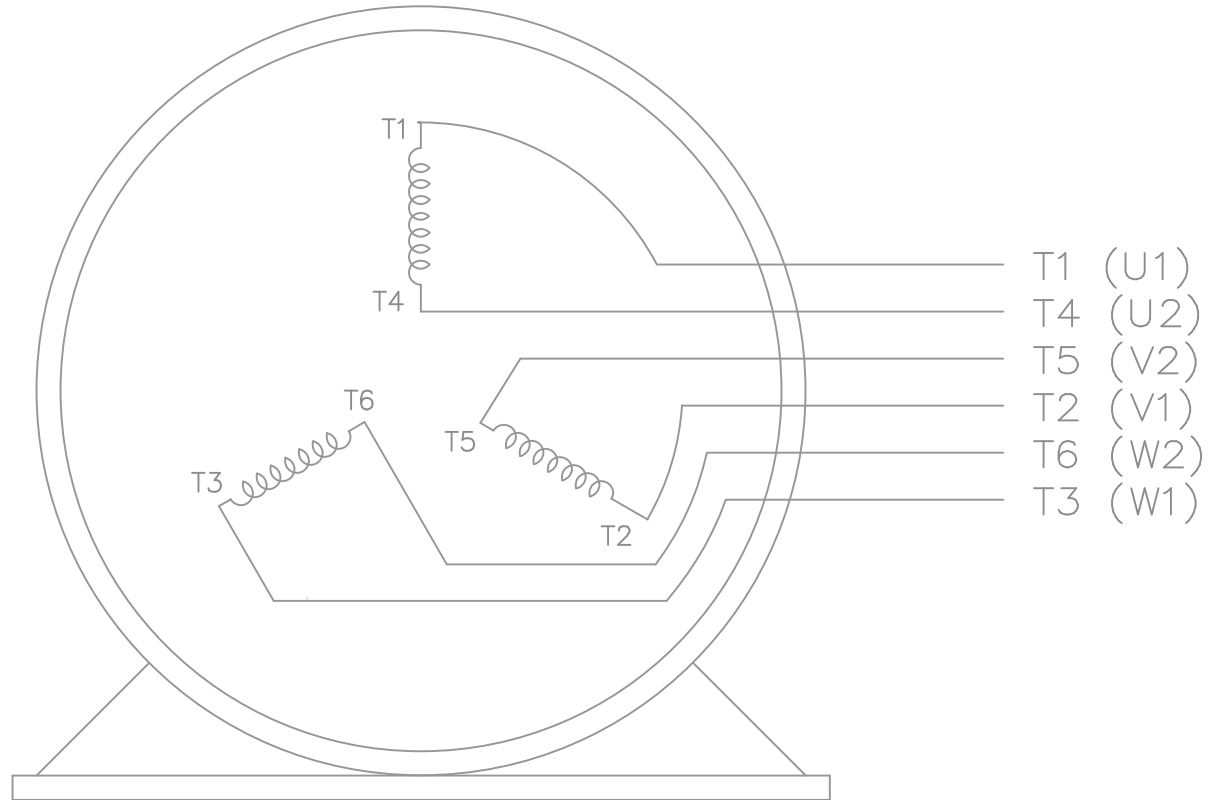
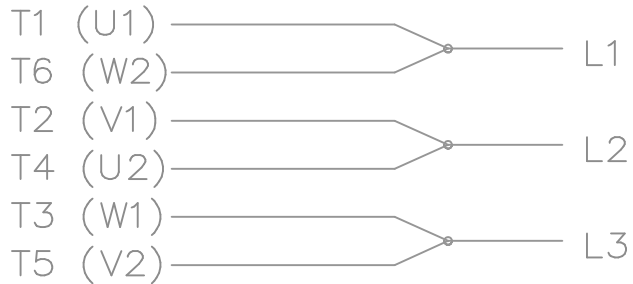
PAGE OF  
 SIZE B  
 DRAWING NO SS509474  
 REV 9

THREE PHASE  
WYE START DELTA RUN

START




RUN



VIEW OF TERMINAL END

NOTE:  
IEC LEAD MARKINGS ARE NOTED  
IN PARANTHESES

			TOLERANCES UNLESS SPECIFIED			DRAWN LZ 01-06-1994		
			DEC.	INCHES		CHK ML 01-18-1994		
			.X	± -		APPD GK 01-18-1994		
3	ADDED IEC NOTE & MARKINGS MU48195	KL 09-23-2003	.XX	± -	TITLE CONNECTION DIAGRAM	SCALE 1=1		
2	REVISED DRAWING MISTAKE CN 29200-2980	ERH 05-15-2003	.XXX	± -	3φ - WYE START DELTA RUN	REF		
1	REDRAWN	LZ 01-24-1994	.XXXX	± -	MAT'L.	FMF		
NO.	REVISION	BY & DATE	CHK	ANG	FINISH	PREV		
THIS DRAWING IN DESIGN AND DETAIL IS OUR PROPERTY AND MUST NOT BE USED EXCEPT IN CONNECTION WITH OUR WORK ALL RIGHTS OF DESIGN AND INVENTION ARE RESERVED THIS IS AN ELECTRONICALLY GENERATED DOCUMENT - DO NOT SCALE THIS PRINT			RFP		CAD FILE EE7340	SIZE A	DRAWING NO. EE7340	PAGE OF 3
			DIST	WA-LB-SB				